

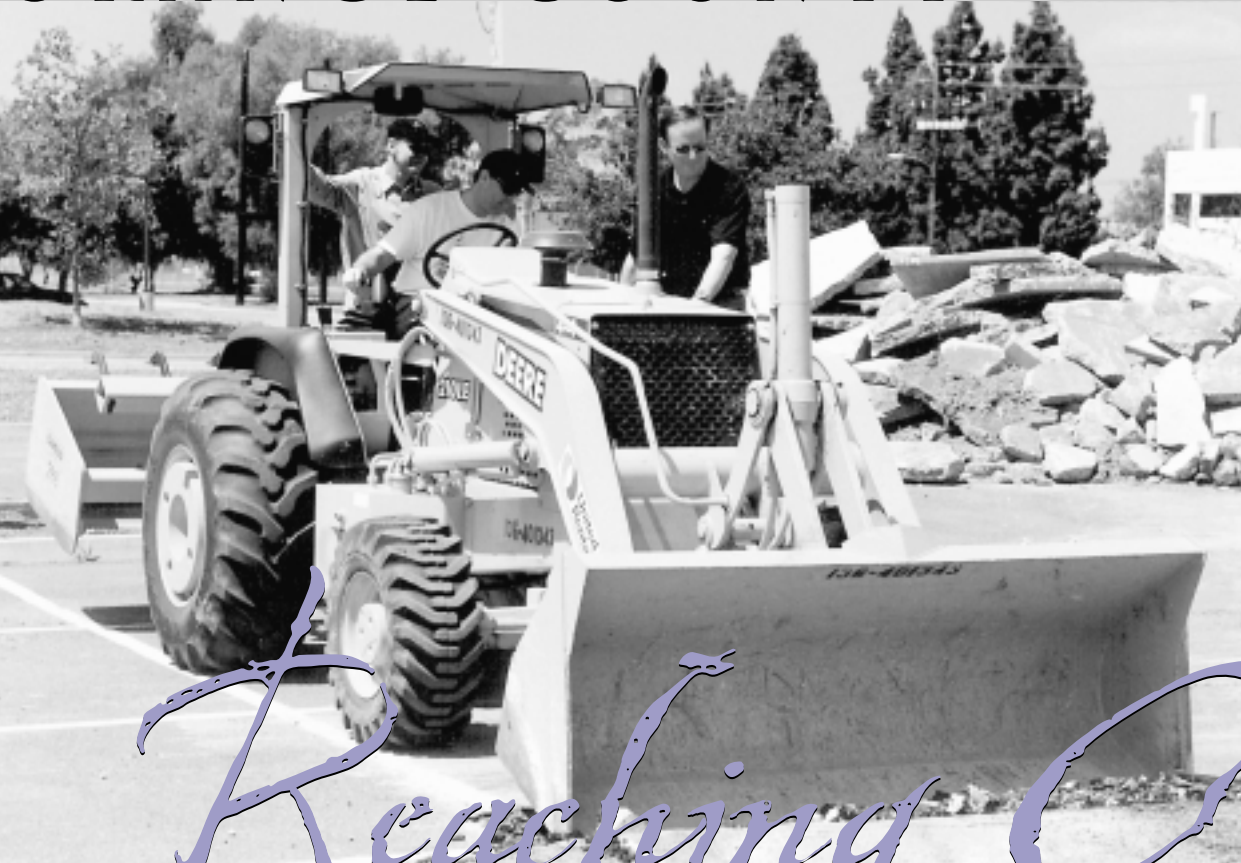
HOMEAID

ORANGE COUNTY

BUILDING
HOPE &
HOMES FOR
THE
TEMPORARILY
HOMELESS

VOL. 8 / ISSUE NO. 1
SUMMER/FALL 2002

Jim Palmer, Orange County Rescue Mission president (left) is joined by HomeAid Orange County board member, Bart Hansen (back), and Tustin Mayor, Jeffery Thomas as they break ground at Village of Hope.



Reaching Out

MAKING HEADWAY

VILLAGE OF HOPE There are nearly 20,000 families trapped in destitute motels, living in cars, or making their homes in cardboard boxes on Orange County streets. These people face many challenges and issues, and although each person's story differs in circumstances, experiences and life choices, many common threads are woven into their plight. Not the least of these issues is a dire need for shelter - a safe place where they can begin again.

HomeAid Orange County fits into the complicated picture of homelessness by supplying the *brick and mortar* and an environment where new lives can begin taking shape. A prime example of one of HomeAid's recent and most aggressive developments is the Village of Hope, a \$9 million dollar multi-use facility located on 5.1 acres of the Tustin Marine Corps Air Station, that broke ground this spring while 200 watched in anticipation as building permits were signed and issued.

It took nearly seven years and close to a million dollars of predevelopment work before this important hurdle was overcome. Throughout the wait committed companies and individuals patiently give of their time and talent to clear the way for renovation and construction now underway. These dedicated participants were recently honored at a predevelopment team recognition luncheon where 24 companies received certificates of appreciation for their work since 1995.

(Continued on page 2)

Oltmans
CONSTRUCTION CO.

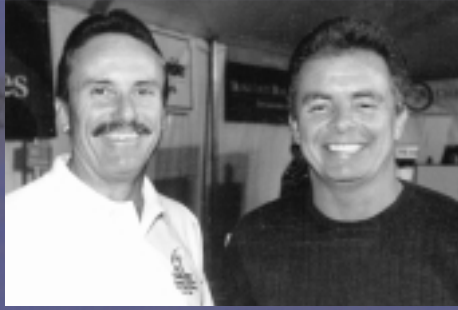
Gensler

access architects

Oma Talley Design, Inc.

Orange County
Rescue Mission

President's Message



Les Thomas and Lennar Homes Charitable Housing Foundation creator, Jeff Roos at Project Playhouse 2001.

HomeAid Orange County strives to build partnerships that achieve more than either entity could accomplish on its own. In doing so HomeAid supporters are not only investing in the care providers for whom temporary shelters are built, but in the people who ultimately reside in these homes.

For example, when a HomeAid project is completed and the keys are handed over to the care provider, that organization as owner of the property may choose to leverage the collateral to secure added resources for facility and program expansion, giving that care provider the ability to help those in need above and beyond HomeAid's initial involvement.

An added benefit is evidenced in the recently completed Precious Life Shelter III designed by JBZ Architecture + Planning and built by Centex Homes. Not only did the care provider receive a beautiful new 5,000 square-foot building to house homeless pregnant women, but in the relationship building process, HomeAid was able to assist them in obtaining operational funding in the amount of \$629,385 from the Children's and Families Commission of Orange County.

Another example is the brainchild of Lennar Homes Homebuilding Division president, Jeff Roos, Lennar Homes Charitable Housing Foundation, established to provide on-going support to aid homelessness, also exemplifies the exponential component of HomeAid's outreach. To accomplish this on-going donation, the Lennar homebuyer will contribute an amount equal to a small percentage of the new home sales price of every Lennar home sold at Mystic Pointe and Nautical Pointe in Huntington Beach, as well as Amerige Heights in Fullerton; Lennar's Allcott neighborhood; and Greystone Home's Marston community.

The investment we make in the *brick and mortar* of shelter development ventures, typically expand to include a vast array of alliances beyond HomeAid, the builder, the care provider and the resident. Often these relationships reach into cities, counties, other agencies and individuals who go on in their respective worlds to affect other lives as a direct result of their involvement with our organization.

Clearly, partnerships and the multiple affects they have on the many lives touched by HomeAid are the essence of the successful growth we have experienced. As HomeAid continues to reach out to new colleagues in our mission to build hope and homes for the homeless, we would like to give thanks to the many partners who continue to give so much.

*Les Thomas
Shea Homes*

Village of Hope continued from cover

The Village of Hope slated to become a national model of successful base re-use planning is the result of a multi-entity collaboration. The successful partnership efforts of the Orange County Rescue Mission; HomeAid Orange County; the Building Industry

Association; the City of Tustin; and a host of other individual and corporate contributors is a clear demonstration of how to utilize private and public partnerships to successfully redevelop closed U.S. military bases to help the homeless.

Oma Talley Design, Inc. provided interior design for this child's room on display at the Village of Hope. The two barracks currently being renovated will provide 192 beds, while the new 40,000 square foot building serving as the hub will include a kitchen and dining areas, warehouse, and office



space for support staff. A second building with a chapel/auditorium will also be part of the campus.

Designed by Gensler and Axxess Architects, the Village of Hope is being constructed under the leadership of Builder Captain, Oltmans Construction. Taking the primary role in recruit-

ment for in-kind contributors, trade partners, suppliers and associates, Oltmans is now the primary catalyst in bringing the following companies together to build the Village of Hope:

Village of Hope Contributor's List

- | | | |
|--|--------------------------------------|------------------------------------|
| American Contractors | Hart's | P.C.B. Construction |
| Angelus Block Company, Inc. | Hi-Cycle Concrete Cutting | Phill Vonk & Company |
| Archuleta & Associates | The Home Depot | Phillips & Associates |
| Axxess Architects | Hope International University | PLSA Associates, Inc. |
| The Barnabus Group | Irvine Canaan Community Church | Power Plus! |
| Beckman Coulter | Irvine Valley Boy Scout Troop 36 | PSOMAS |
| Brandow & Johnston | JBZ Architecture + Planning | Red Point Builders & Partners |
| Calvary Church of Santa Ana | Kleinfelder | Reed Thomas |
| The Capital Group Companies | Ko & Associates | Regal Rents |
| CH2M Hill | Lee Ekola Wood | Royal Mattress |
| Chapman University | Lennar Communities | Saddleback Community Church |
| Cibola Systems | Lennar Partners | Saffell Family Trust |
| City of Tustin | Leonard's Carpet Service, Inc. | Shea Homes |
| The Collaborative West, Inc. | Mammoth Electric, Inc. | Shea Properties |
| ConAgra Grocery Products Company | Mark McGwier Foundation for Children | Southern California Edison Company |
| Contact Resources, Inc. | Mission Bible Class of St. Olaf | Southern California Gas Company |
| Cover Me Blind Window Coverings | Lutheran Church | Speedy Glass Service |
| Culp & Tanner | Mitsubishi Motor Sales | Steelcase Inc. |
| Designer's Work Room | Mohler Construction | Systems Source, Inc. |
| DGM & Associates | Naftex | Thermalair, Inc. |
| Diamond Crest Homes | Nu West Insurance Services | TMD Consulting |
| Eagle Roofing Products | OCB Reprographics, Inc. | Toshiba America Electronics |
| The Eisner Foundation, Inc. | Oltmans Construction Company | Components |
| The Emelco Foundation | Oma Talley Design, Inc. | Tsuchiyama & Kaino |
| Eric Figge Photography | Orange County Drywall | Tustin Police Department |
| Federal Disposal Service | Orange County Erectors | Ultra Systems |
| First Presbyterian Church of Santa Ana | Orange County Register | Unicorn Storage & Delivery |
| The Fluor Corporation | Orange County Rescue Mission | Unisys Corporation |
| Frazeo Paints | Individual Donors | United Rentals |
| G.D. Heil, Inc. | Orange County Sheriff's Department | Universal Truss, Inc. |
| Gensler Architects | Outdoor Dimensions | UPS |
| George Hoag Family Foundation | Pacific Bell | Veneklassen Associates |
| Glenn R. Johnson Architectural Models | Pacific Rim Drywall Association | Vista Paints |
| Glumac Engineers, Inc. | PacificCom | Volunteer Center of Orange County |
| Golden Gate Concrete Cutting | Pacific Life Foundation | Webb Design |
| The Greater Alarm Company | Pacific Life Insurance Company | The Weingart Foundation |
| Hall & Foreman, Inc. | Pacificare Foundation | World Works |
| Hamilton Construction Materials | Pascoe-Dirpes & Associates | |

Additional interested companies and individuals may contact Oltmans Construction at (562) 948-4242.

2002 SHELTER UPDATE

CASA TERESA II LEADERSHIP TEAM COMMITTED

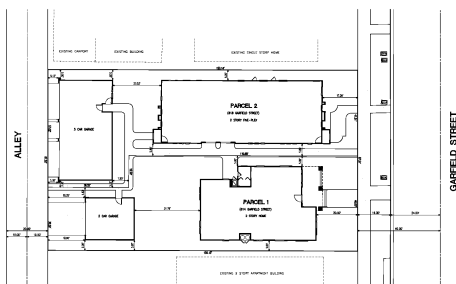
Fieldstone Communities is on board as Builder Captain for Casa Teresa, along with Dawson, Hannouche Pate who will serve as the architects. With a design portfolio consisting of distinctive custom residences to high-density attached housing, Newport Beach-based Dawson Hannouche Pate Architects have received numerous architectural design awards throughout their 14-year career in Orange County. Michael Schlesinger is serving as the HomeAid Orange County board liaison. This new construction transitional facility located in Orange will add 24 beds to aid homeless pregnant women and their children.



SAN MIGUEL RESIDENCES

TOP BUILDERS TAKE THE LEAD AS SAN MIGUEL RESIDENCES BULDER CAPTAINS

Builder Captains, Lennar Homes of Southern California and Greystone Homes are providing the leadership for this Santa Ana shelter development venture. These two residences, one a craftsman style new construction designed by Bassenian/Lagoni and the other a Spanish craftsman style five unit renovation designed by Bloodgood Sharp Buster, will be serviced by care provider, Mercy House. MDS Consulting donated land planning, civil engineering and land surveying.



ORANGEWOOD CHILDREN'S HOME

HomeAid Orange County board member, Carl Neuss is serving as the liaison for this shelter development venture designed by Hezmalhalch/Perlman Architects. This multi-purpose facility serving severely abused children consists of a 3,092-square foot multi-purpose building, and is located in Orange.

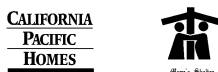


MARY'S SHELTER III

California Pacific Homes, previously leading the development for both Mary's Shelter I and II, is once again serving as the Builder Captain for Mary's Shelter III, a room addition that will add approximately 500 square feet of space. Dale Christian/Structural Engineer, Inc. is providing the structural drawing, structural details and calculations for framing and foundation of the addition.



Jon Robertson, senior vice president of development and operations, has been instrumental in California Pacific Homes' involvement with HomeAid.



LAURA'S HOUSE

The Laura's House building team led by Master Builder Captain, Talega Associates of San Clemente has recently been approved for a Weingart grant in the amount of \$250,000. The Spanish Colonial structure designed by Bassenian/Lagoni Architects, will serve abused women and their children.



MARY'S SHELTER IV

Inspired by the enthusiasm of Robert J. Williams who designed Pirate's Hideaway, one of the entries for HomeAid's Project Playhouse 2001, KTGy Group, Inc. recently enlisted as the architects for the project. Headquartered in Irvine, KTGy is 85 professionals strong and was previously involved with HomeAid through Human Options a safe house for victims of domestic violence.

The Builder Captain for Mary's Shelter IV, HomeAid's 41st shelter, a new construction shelter development venture is being sought. Those interested in taking part in this project may call Scott Larson at HomeAid Orange County (949) 553-9510.



GOLDEN NUGGET AWARD

Precious Life Shelter Garners Gold Nugget Community Spirit Award

HomeAid Orange County's Precious Life Shelter received the Gold Nugget Builder Industry Community Spirit Award presented at the recent West Coast Builder's Conference held in San Francisco. *The Best in the West* were selected from a call for entries sent to 14 Western United States and countries of the Pacific Rim.

To be eligible for this award, the project must have been developed on a largely pro-bono basis (at least 50%), and must also have made a measurable significant benefit in meeting social needs within the community.

Led by Builder Captain Centex Homes, South Coast Division, with architect, JBZ Architecture + Planning and interior designer Oma Talley Design, Inc., Precious Life garnered in-kind contributions in excess of \$564,000 - an incredible 80 percent of the project cost!



(From left) Richard Douglass, president of Centex Homes South Coast Division, the Builder Captain for Precious Life Shelter, Gold Nugget Community Spirit Award winner for 2002; is joined by Don Jacobs, president of JBZ Architecture + Planning, Precious Life architect; and Scott Larson executive director of HomeAid Orange County, the developer of this shelter project serving homeless pregnant women.

HOMEAID UPDATE STAFF

HomeAid Update is published by
HOMEAID ORANGE COUNTY
17744 Sky Park Circle, Suite 170
Irvine, CA 92614
Tel: (949) 553-9510
Fax: (949) 224-1855
E-mail address: info@homeaidoc.org
Website: www.homeaidoc.org



President: Les Thomas
Executive Director: Scott Larson
Director of Development: Gina Economakos
Public Relations / Communications Manager: Delene Garbo
Fundraising & Event Coordinator: Jennifer Henderson
Administrative Manager: Julia Ung
Executive Assistant: Joanie Smith

WE ARE MOVING!!!

As of August 1st HomeAid Orange County will be residing in its new home at 17744 Sky Park Circle, Suite 170, Irvine, CA 92614, just a few blocks from its current location. Phone, fax and emails remain the same.

Message from the Executive Director

Last year one in three Californians could afford to buy a median-priced home. Today only 27% of the population has that luxury.

As home buying and rental costs skyrocket many underemployed individuals and families are priced out of the market. The trickle down effect of rising costs and diminished housing options contributes directly to the increasing numbers of homeless individuals and families living in Orange County, now soaring over 23,000 in comparison to 12,000 only five years ago.

As a result of the disparity between supply and demand, those who find themselves residing in a shelter environment may be hit yet a second time. Once shelter residents complete their respective programs and make the move from the shelter into the mainstream, they may discover that the serious lack of housing and high costs put them at risk and back into the position of potential homelessness.

The solution lies in building more housing in general, and the work of HomeAid is a critical piece in the housing continuum.

Thank you for your involvement and support in providing one of the fundamentals of life...a home.



Scott Larson
Executive Director



Peaceful Surroundings for Precious New Lives

On September 14, 2001 I arrived at Precious Life Shelter. When I first came here I was apprehensive, fearful and confused. I doubted that the future held any hope for my unborn child and I. Now it is the end of April and I'm two weeks away from my due date. I must say I feel more confident about my future. Precious Life has made opportunities available to me, and has helped make achievements possible for me.

Since I've been here I got a job; settled court issues; completed all court orders; went back to school; completed child-birthing classes; attended co-dependants anonymous meetings; and also attended educational classes here at Precious Life.

I remember when I first came here there was a new transitional home under construction. Thanks to the partnership of HomeAid Orange County with Precious Life for making this home possible. I was able to see the daily progress of the new home as it was near completion. I used to peer in and think to myself, "What a beautiful home, whoever gets to live there is truly fortunate." Never once thinking that I would be one of the first to move into the masterpiece. It has been a very pleasant experience to live in such luxury.

I now have roommates, three who delivered beautiful, healthy babies, and now live in our new home. I am looking forward to having my child and I feel very blessed that I have such a peaceful and gorgeous place to bring my baby home to.

Thank you, Natawsha Rusk

ACCOLADES FOR HOMEAID

SAMUELI AWARDS \$10,000 TO HOMEAID ORANGE COUNTY

HomeAid Orange County was the recent recipient of the Samueli Foundation's *Big Heart Award*, providing HomeAid with a \$10,000 grant.

The Samueli Foundation established in 1999 by Dr. Henry & Susan Samueli, actively promotes its vision of being a resource for organizations that empower people to more fully realize their potential. HomeAid wishes to express its gratitude to the Samueli Foundation for recognizing its efforts as a worthy investment in the Orange County community.



HomeAid Orange County executive director, Scott Larson, receives Big Heart Award from Susan Samueli.

HOMEAID ORANGE COUNTY RECEIVES DOVE AWARD

Human Options recently honored HomeAid Orange County with the DOVE Award in recognition of its outstanding contributions to Human Options and all of the domestic violence programs in Orange County.

The award was presented at the annual *Serious Fun* event at the Four Seasons Hotel in Newport Beach. In addition to HomeAid other building industry leaders playing a vital role in helping Human Options serve the needs of families suffering as a result of domestic violence issues.

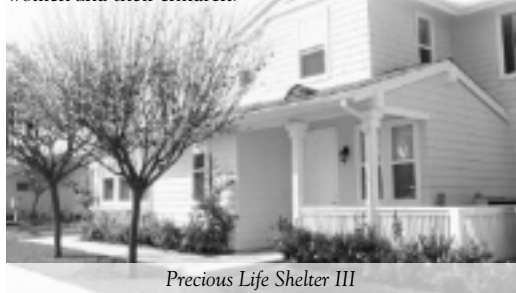
Among those recognized were Costain Homes, Lennar Homes, Shea Homes, Steton Construction Group, and over 200 contributors - all donated materials and countless hours to build Human Options' Emergency Shelter.



The Dining Area in one of the Human Options buildings where homeless women and their families seek refuge from domestic violence.

CENTEX HOMES SOUTH COAST DIVISION GARNERS AHA AWARD

Centex Homes South Coast Division was recently honored at the Affordable Housing Awards Breakfast held by Orange County Community Housing Corporation. Centex Homes was recognized for outstanding contribution and dedication to the Precious Life Shelter Project illustration exceptional leadership and commitment by providing housing for homeless pregnant women and their children.



Precious Life Shelter III

Under the leadership of the Centex team over \$564,000 was contributed in building industry revenue (including material, labor and cash) to Precious Life Shelter III providing pro-bono contributions of over 80%. Working in partnership with HomeAid Orange County, Centex Homes, JBZ Architecture + Planning and Oma Talley Design, Inc. successfully recruited over 135 trade partners for the project. Congratulations Centex!

Centex Homes was presented with the Affordable Housing Award for Precious Life Shelter III designed by JBZ Architecture + Planning. (From left) Theresa Murphy executive director, Precious Life Shelter, Angel Garcia, Centex Homes and Brad Shippcott, Centex Homes.



NATIONAL RECOGNITION FOR HOMEAID ORANGE COUNTY

HomeAid Orange County is the proud recipient of the national 2002 Honorable Mention, one of three top honors awarded by the Mutual of America Community Partnership Awards.

The Mutual of America Community Partnership Award recognizes outstanding nonprofit organizations in the United States that have shown exemplary leadership by facilitating partnerships with public, private or social sector leaders who are working together as equal partners (not as donors and recipients) to build a cohesive community that serves as a model for collaborating with others for the greater good.

Among the prestigious selection committee are:

Richard Boyle- Manhattan Bank
Hugh Carey - former New York Governor
Frances Hesselbein- Chairman of the Drucker Foundation
Elie Wiesel—Nobel Peace Prize winner in 1986

The announcement was made at a luncheon immediately following a shelter tour attended by New York-based Thomas Gillian, chairman and chief executive officer for the Mutual of America Foundation who was joined by Theodore Herman, vice chairman and two representatives from the San Diego office, Jim Tiensvold, regional vice president field consulting services and Janet Koblen, second vice president field consulting services. Also present at the luncheon were board representatives; president, Les Thomas, Bart Hansen, Brenda Silvey and Sonia Lister.

The honor was bestowed on HomeAid Orange County for its Shelter Development Program and will result in a national public relations outreach as well as a formal presentation held in New York in November. Additionally some time after the first of the year, Mutual of America will come to Orange County to host a luncheon honoring outstanding HomeAid Orange County participants.

SAVE THE DATE!

Valley Building Materials Golf Tournament September 16th

Valley Building Materials is holding its 7th Annual Charity Golf Tournament on September 16, 2002 at the Aliso Viejo Golf Club. Proceeds will once again benefit HomeAid Orange County. Last year's tournament earned \$29,000, the largest single contribution raised by one company on behalf of HomeAid.

The success of the 2001 tournament was largely due to the silent auction and the prize raffle held during the tournament banquet. In an effort to duplicate this success, Valley Building Materials is asking for your support by donating an item, which will either sell raffle tickets or be put up for bid. Those interested in donating may do so by contacting Gina Economakos of HomeAid Orange County (949) 553-9510 or via email at gina@homeaidoc.org.



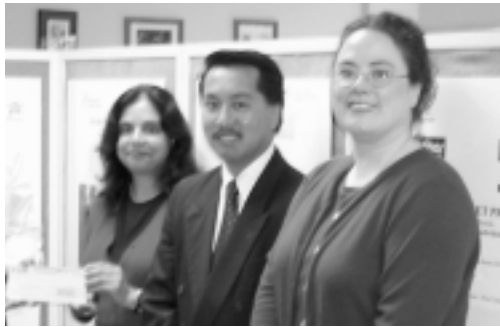
The Bassenian/Lagoni Team proudly displays their awards for third place finish at Valley Building Materials Golf Tournament 2001.



Valley Building Materials owners John and Matt Kolendich at last year's Valley Building Materials golf tournament, to be held again at Aliso Viejo Golf Club on September 16.

In the Community

CAL FED PRESENTS HOMEAID ORANGE COUNTY WITH \$2,500 GRANT.



Gina Economakos, HomeAid Orange County's Director of Development (far right) is presented with a check in the amount of \$2,500 from Rashi Kallur, senior community relations officer for Cal Fed Bank and Theodore Nguyen vice president of the Corona Del Mar Branch of Cal Fed.

OCAR CONTINUES ITS GENEROUS SUPPORT OF HOMEAID ORANGE COUNTY

At a recent Orange County Association of Realtors golf tournament HomeAid Orange County was presented with a check in the amount of \$1,500. A heartfelt thank you for the continued support of this dynamic organization.



Terry Matt of SoCal MLS presents Jennifer Slusher-Henderson of HomeAid Orange County a check for \$1,500.

FELESIA DAILEY HONORED FOR COMMUNITY SERVICE

HomeAid Orange County recently honored Felesia Dailey, real estate specialist with Harte Hankes' publication (the PennySaver), for her consistent and enthusiastic support. Felesia was publicly recognized for outstanding community service at the 26th annual Orange County Volunteer Center's Spirit of Volunteerism Awards ceremony, held at the Disneyland Hotel.

It was the direct result of Dailey's BIA membership that originally brought her to HomeAid. Since her arrival on the scene she has been tireless in her efforts to give of herself personally, as well as reaching out to obtain the support of her employer, who - for two consecutive years - has provided media coverage for Project Playhouse, HomeAid's signature fundraiser, held in the fall at Fashion Island in Newport Beach.

The accomplishments of HomeAid Orange County are a direct result of partnerships, including volunteers, who like Felesia Dailey, have collectively contributed over 500,000 volunteer hours.



Jennifer Slusher-Henderson, HomeAid Orange County; Felesia Dailey, PennySaver; and Gina Economakos, HomeAid Orange County; at the Spirit of Volunteerism Awards ceremony.

WORLD SAVINGS LENDS ITS FINANCIAL SUPPORT TO HOMEAID ORANGE COUNTY



Teresa O'Donohoe and Dan O'Dowd of World Savings recently presented a check in the amount of \$5,000 to HomeAid Orange County.

FISHING TO FUND THE HOMELESS



Lawyer's Title recently held its 2nd annual Trout Fishing Tournament at Irvine Lake where more than 100 people gathered to compete for the catch of the day. Realtors and affiliates took to the lake at 6:00 a.m. vying for prizes given to the largest Rainbow, Brown and Brook trout. Proceeds in the amount of \$577 from the event were donated to HomeAid Orange County.

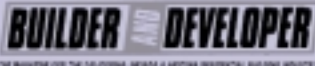
LENNAR HOMES CREATES INNOVATIVE WAY TO HELP THE HOMELESS



Since the company's inception in 1954 the Lennar family of builders has reached out to its respective communities through charitable donations in an effort to abate the challenges facing society. The overwhelming and on-going need for the transitionally homeless was the primary reason that Lennar established the Lennar Charitable Housing Foundation.

An amount equal to a small percentage of the sales price of every Lennar Boardwalk home sold will be contributed by the buyer to the foundation. The Lennar Charitable Housing Foundation is Lennar's way for families fortunate enough to own a home to become its partner in providing hope to those without a roof over their heads.

PRESIDENT'S CIRCLE



BENEFACTOR



First American Title Company



PATRON



FOUNDATION SUPPORTERS



*Michelle Pate
Chair*



*W.E. Bill Mitchell
Master of Ceremonies*



*Tim Paone
Co-Master of Ceremonies*



*Chuck Dreyer
Auctioneer*



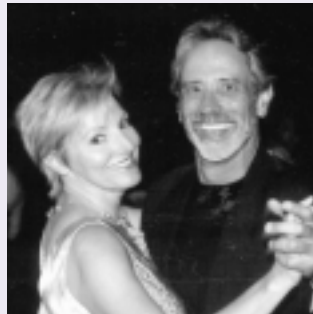
Shelter Graduate - Coreena



Delene Garbo & Peter White



Carl Neuss



Chuck & Debi Trevisan



Don & Kate Moe



Nick Slevin & Rich Lambros



Larry Buster



Annette & Joe Oltmans



Toni Blackman & Ron Saienni



Theresa Blakslee, Brenda Silvey & Donna Hahn



Jay Blakslee & Lee Rogalmer



Rainbow of Hope Honorees 2002



*Builder: Centex Homes
Richard Douglass, Timi Flowers, Angel Garcia*



*Care Provider – Mary's Shelter
Dr. Nancy Rybski*



*Corporate Partner:
Morrison & Foerster, LLP
Sonia Lister*



*Consultant: Bassenian/Lagoni Architects
Kenneth Niemerski, Wendy Woolsey, Lee Rogaliner
& Steven Dewan*



*Volunteer:
Jennifer Henry*



*Sub Contractor: BCI Framing & Drywall
Tom Brooks, Marc Fabre*

- Les Thomas, President
Shea Homes
- Jay Blakslee, Treasurer
The Blakslee Companies
- Val Celestin, Secretary
Interiors by Valerie
- Brenda Silvey
V.P. Fundraising
- Larry Buster
First American Title Company, Inc.
- Greg Currens
Style Interior Design, Inc.
- Steve Esser
The Master's Program
- Mike Grubbs
William Lyon Homes
- Donna Hahn
Hahn Communications
- Bart Hansen
Nieupointe Enterprises
- Richard Hunsaker
Hunsaker & Associates Irvine, Inc.
- Stephen E. Hester
Trimark Pacific Homes
- Sonia Lister
Morrison & Foerster, LLP
- Carl Neuss
Institutional Housing Partners
- Tim Paone
Paone Consulting
- Lee Rogaliner
Bassenian/Lagoni Architects
- Ron Saienni
Biltmore Communities, Inc.
- Michael Schlesinger
Lennar Partners
- Nick Slevin
Builder and Developer Magazine
- Chuck Trevisan
The Irvine Company

THE HOMEAID MISSION

HomeAid Orange County, the founding chapter of HomeAid America, was established by the leadership of the Orange County Chapter of the Building Industry Association of Southern California in 1989. HomeAid Orange County is an affiliate of the National Association of Home Builders, a 501 (c) 3 charitable organization with the mission of building or renovating shelters for the temporarily homeless.

HomeAid serves individuals and families who find themselves without shelter due to factors such as domestic violence, job loss, catastrophic illness and crisis pregnancy. To date, HomeAid has raised over \$20 million in in-kind contributions resulting in the addition of over 577 shelter beds benefiting thousands of men, women and children in Southern California.



FOR MORE INFORMATION PLEASE CALL (949) 553-9510

Project Playhouse



THE SMALLEST THINGS MAKE THE BIGGEST DIFFERENCE

HOMEAID'S 11TH ANNUAL PROJECT PLAYHOUSE

MARK YOUR CALENDARS for Project Playhouse 2002.

This much anticipated event will be held at Fashion Island in Newport Beach beginning on September 14th with a kick-off Premiere Party for the entire family!

Premiere Party

Saturday, September 14, 2002 2:00 p.m. – 6:00 p.m. Tickets - \$15 Donation
THE ONLY TIME YOU CAN GO INSIDE THE PLAYHOUSES!!!

Playhouse Village Tours Begin

Weekends Only – Sunday, September 15, 2002
11:00 a.m. – 5:00 p.m. Tickets - \$5 Donation

Auction Party

Saturday, October 12, 2002 5:30 p.m. – 9:30 p.m.
Tickets – Include Public Auction Party, Dinner and Entertainment...
Pre-paid - \$30 At the Door - \$40
Family 4-Pack - \$75 Children Under 12 - \$15 Children 3 and under FREE

TICKET INFORMATION CONTACT:

HomeAid Orange County – (949) 553-9510
www.projectplayhouse.org or www.homeaidoc.org
Fashion Island Concierge – (949) 721-2000.

2002 PROJECT PLAYHOUSE BUILDER TEAMS

- Finton Construction with KTG Group, Inc.
- John Laing Homes with Dahlin Group Architects
- Lennar Homes/Greystone Homes
with BBG Architects
- Mulvaney & Company with EBTA Architects
- Newport Beach Firefighters Association
also providing architect services
- Pardee Homes with Bassenian/Lagoni Architects
- Pulte Home Corporation with Urban Arena
Landscape Architecture & Planning
- Rancho Mission Viejo/Western National Builders
with William Hezmalhalch Architects, Inc.
- Shea Homes with Bassenian/Lagoni Architects
- Standard Pacific Homes
with Lim Chang Rohling and Associates
- Tony Valentine Construction
with Brion Jeannette Architecture
- William Lyon Homes
with Linda Francis with Dennis Flynn Architects

Those who are interested in becoming sponsors, advertisers and underwriters may contact, HomeAid's director of development, Gina Economakos at (949) 553-9510.



Jennifer Henry, senior director, custom home sites for Irvine Community Development Company welcomes Glen Black of Vignette Corporation (right) who will be replacing Henry as Project Playhouse co-chair, along with Michael Levi Schrock, now serving his 4th year in that role.



17744 Sky Park Circle, Suite 170
Irvine, California 92614

Address Service Requested

Non-Profit
Bulk Rate
U.S. Postage
PAID
Irvine, CA
Permit No. 339