

# HOMEAID

## ORANGE COUNTY

BUILDING  
**HOPE** &  
HOMES FOR THE  
TEMPORARILY  
HOMELESS

VOL. 7 / ISSUE NO. 2



*The recent Emmanuel House grand opening ribbon cutting was officiated by (front row from left) Scott Larson, executive director HomeAid Orange County, Loretta Sanchez, Congresswoman 46th congressional district, Miguel Pulido, Santa Ana Mayor, Larry Webb, CEO of John Laing Homes, and Father Jerome Karcher, Mercy House founder. Also joining in the ceremonies were (back row from left) Paul Giles Santa Ana Historic French Park Neighborhood Association president, L.J. Edgcomb, president John Laing Homes, and Larry Haynes, executive director, Mercy House.*

## PARTNERSHIPS IN ACTION

**EMMANUEL HOUSE** The John Laing Homes' team under the leadership of Larry Webb is to be congratulated for their extraordinary work in constructing Emmanuel House, California's first new shelter dedicated to homeless adults living with HIV or AIDS. Emmanuel House located in Santa Ana, was dedicated on April 29, 2001, and is now up and running. Thanks to the partnership between, HomeAid Orange County, care provider, Mercy House, the City of Santa Ana, and Builder Captain, John Laing Homes, 21 homeless men and women living with HIV/AIDS will have a place to call *home*.

"At John Laing Homes, giving back to the communities where we build is a heartfelt and integral part of our corporate mission and values," said Larry Webb, chief executive officer of John Laing Homes. "It's been great working with Mercy House, HomeAid, and the City of Santa Ana to make this project a reality for those living with HIV or AIDS," said Webb, whose company, and over 200 trade partners and associates donated \$1.7 million to the project.

Designed by RNM Architects and Planners, the 16,000 square-foot structure is a two-story home with interiors valued at over \$300,000 created by Creative Design Consultants.

Slated to serve as a model for other projects nationwide, the craftsman-style home, complete with dormer windows and an over-sized front porch, offers public areas such as living room with fireplace, dining room, patio, deck and library complete with computer stations.

Emmanuel House was built primarily through in-kind contributions in the form of labor, services and materials donated by members of the Building Industry Association, the organization that formed HomeAid in 1989 to serve as its charitable community outreach.



CREATIVE DESIGN CONSULTANTS, INC.



*Spirits soared in late April when over 400 guests attended the Emmanuel House grand opening celebration. Among the guests, were Mike Lennon (left) executive director of HomeAid America and Les Thomas, Shea Homes Southern California division president.*

With Emmanuel House now up and running, we at HomeAid turn our attention to three new shelter development programs, all of them with previous care provider partners...

We are pleased to announce that Fieldstone Communities has come on board as the Builder Captain for HomeAid Orange County's 39th project, a transitional facility for Casa Teresa. This new construction to be located in Orange is the second partnership for HomeAid and Casa Teresa. Adding 12 beds to Orange County's current inventory, Casa Teresa's newest residence will provide living quarters for homeless pregnant women as they strive to generate futures for themselves and their children.

A much-needed room addition to Mary's Shelter, a non-profit that serves pregnant minors, will add approximately 500 square feet of added space. Led by Builder Captain, California Pacific Homes, Mary's Shelter represents the 40th shelter venture since HomeAid's inception in 1989.

Mary's Shelter is also exploring a second phase, which will consist of a new building adding 12 beds and an office. Located on 17th Street in Santa Ana, this residence, if approved would be HomeAid Orange County's 41st project.

These latest additions to the HomeAid roster exemplify the many opportunities available through the BIA's charitable outreach, HomeAid. As we continue to grow and partner with our communities and industry associates, we make a lasting impression on the lives of those who look to our industry for assistance. To all of you who have given so generously, your gifts are priceless...thank you for being there, you are helping to make a difference.

Les Thomas  
Shea Homes

## PRECIOUS LIFE SHELTER



**CENTEX HOMES**  
SOUTH COAST DIVISION



*Representatives of HomeAid, Centex, Precious Life and other companies donating their time and services to Precious Life, gather at a recent framewalk. From left to right, Gene Kiyotoki, Shannon Siefken, Steve Esser, Theresa Murphy, Angel Garcia, Jim Guccione, Timi Flowers, Brad Shipcott, Jason Marr, Katie Silgenbauer and Scott Larson.*

Precious Life Shelter residents, staff and contributors were all smiles at the recent framewalk, as they witnessed the third phase midway through construction.

Centex Homes, the Precious Life Builder Captain's team, including Jim Guccione, Brad Shipcott, and Timi Flowers were joined by Shannon Sifken and Gene Kiyotoki of JBZ Architecture + Planning; HomeAid Orange County board liaison Steve Esser; and Kate Silgenbauer of Oma Talley Interior Design - that in addition to contributing its interior design services - also donated \$5,000 to the project.

Under the guidance of Roland Osgood, president of the Centex South Coast Division; Guccione, vice president of operations; Flowers, director of purchasing; and Precious Life project superintendent Angel Garcia; were responsible for involving 50 companies and individuals who donated their time, talent and dollars to this project.

JBZ Architecture + Planning, the project's designer and spearhead, has played a key role in all three phases of the Precious Life shelter venture, starting in 1991. The current two-story facility created by JBZ features a living unit for the house manager, a kitchen, and a handicap accessible unit, and completes the existing Precious Life campus. Located in Los Alamitos, the \$300,000 two-story structure will add space for a dozen beds, counseling office, and child-care.

Precious Life accommodates homeless women with newborns and pregnant women who are at least 18. This new facility will help with the inherent costs of rebuilding lives as the women work to build new lives.

## ORANGEWOOD CHILDREN'S HOME

Designed collectively by both Perlman and William Hezmalhalch Architects, Phase II of Orangewood Children's Home consisting of a 3,092 square-foot multi-purpose building, is moving forward.

The development team including HomeAid board liaison, Carl Neuss is exploring issues such as elevator needs, union requirements, project design, and funding, with the next step to re-initiate dialogue with architects and potential builders. As of this writing a Builder Captain has not been assigned. Interested builders may contact Scott

Larson at the HomeAid Orange County office for details on the project.

Orangewood Children's Home is the only emergency shelter in Orange County that accepts severely abused, abandoned and neglected children ranging from day-old newborns to 18-year-old teens and is the second partnership for HomeAid Orange County and Orangewood.



## LAURA'S HOUSE

Asbestos abatement is completed at San Clemente's Laura's House, with plans being made for the demolition of the two existing buildings. This new 16,000 square-foot Bassenian/Lagoni Spanish Colonial design will serve abused women and their children and will include six apartment units, a counseling center,

legal services and a children's center. Talega Associates, LLC is the Master Builder Captain with Val Celestin and Ron Saienni serving as the HomeAid Orange County board liaisons.



# PROJECT UPDATE

## MERCY HOUSE GARFIELD STREET PROJECT



*The combination of the side-by-side Craftsman and Spanish Colonial styles compliment the Historic French Park District of Santa Ana, where the Mercy House Garfield Street Project is located.*

The Bassenian/Lagoni architectural team has joined the Mercy House Garfield Street Project and will work in collaboration with Bloodgood Sharp Buster Architects.

Led by Builder Captain, Lennar/Greystone, the design development is continuing to move forward with the initial concept scheduled for presentation to the Historic French Park Neighborhood Association

architectural committee. A review and neighborhood board presentation is slated to follow.

The \$300,000 renovation and new construction consists of the renovation of five units and the new construction of a single-family residence that will add a minimum of 20 beds to the existing Orange County inventory. Chuck Trevisan is serving as HomeAid board liaison.



## VILLAGE OF HOPE



The Corporate Combined Volunteer Project (CCVP) comprised of a collective group of 16 Orange County company employees recently contributed their time and talent to the renovation of two Tustin Marine Corp barracks, Phase I of Orange County Rescue Mission's Village of Hope that will ultimately provide 192 beds to aid Orange County's homeless families. HomeAid Orange County's event manager, Gina Economakos who took the lead as liaison for the CCVP companies, Oltmans Construction, the project's Builder Captain, the Orange County Rescue Mission, and HomeAid said that it was a great experience for all the companies involved.

In addition to CCVP's work, HomeAid Orange County and the Rescue Mission are grateful to Brian Maag of Orange County Drywall who

provided the finishing touches and completed rooms as needed. Maag also serves as vice president of the Pacific Rim Drywall Association, who donated \$5,000 to the project. HomeAid and the Village of Hope also thank Phill Vonk of Phill Vonk Painting & Paper Hanging Company who came on board to complete the painting.

In addition to the CCVP work and the completion of the painting of the barracks, HomeAid is pleased to announce that the Village of Hope's new construction documents for Phase II, have been submitted to the City of Tustin and are currently under review. The Village of Hope was designed by Gensler and Axxess Architects with Bart Hansen, HomeAid board member serving as liaison for this Oltmans Construction project.



## Message from the Executive Director



Christine Diemer-Iger

It's a bitter-sweet moment for HomeAid as we say a collective goodbye to Christine Diemer-Iger who after 12 years of outstanding leadership is resigning to join the law firm, Manatt, Phelps & Phillips, LLP.

Without question, Christine's enthusiastic support of HomeAid and its projects has been instrumental to the on-going success of HomeAid, which as you may know, was originated near the time of Christine's arrival on the BIA scene back in 1989.

During her 12 years at the helm of BIA's nearly 1,000-member trade association, Diemer-Iger positioned the Building Industry Association as the voice of record on homebuilding related issues. Throughout her tenure, she has worked closely with private business, and local, state and federal officials to solve some of Orange County's complex land use and related business development issues.

Christine Diemer-Iger serves as an outstanding representation of the thousands of committed individuals who have contributed their time and talent to help those in need.

Lynne Fishel, deputy director of BIA/OC for the past five years will serve as interim CEO until a search committee appoints a permanent successor.

Thank you, Christine, from the HomeAid staff and partners for all you have done to change the lives of thousands of Orange County's homeless. Congratulations and best wishes in your new endeavor, you will be truly missed.

Scott Larson  
Executive Director

## HomeAid Update Staff

HomeAid Update is published by HOME AID ORANGE COUNTY  
9 Executive Circle, Suite 100  
Irvine, CA 92614

Tel: (949) 553-9510  
Fax: (949) 224-1855

E-mail address: info@homeaidoc.org  
Website: www.homeaidoc.org

President: Les Thomas  
Executive Director: Scott Larson  
Special Events Manager: Gina Economakos  
Public Relations / Communications Manager: Delene Garbo  
Fundraising & Event Coordinator: Jennifer Henderson  
Administrative Manager: Julia Ung  
Executive Assistant: Joanie Smith  
Art Director: Dwayne Cogdill / Cognition Design



# EMMANUEL HOUSE



The towering stone fireplace garners the center of attention in this open living area complete with massive skylights. The room has been designed for comfort and serves as a gathering place for Emmanuel House residents. The rustic interior, valued at over \$300,000 is the creative brainchild of Creative Design Consultants.



Photo: Eric Figge

The cherry hardwood cupboards are the focal point of this multi-purpose computer room/library, which serves as a quiet refuge.

The craftsman-style home designed by RNM Architects & Planners and built by John Laing Homes, has over 16,000 square-feet of tastefully designed living area including dining room, living room, media room, library and family-style kitchen. Emmanuel House provides 21 individual rooms and a living area for on-site staff, along with an office suite for Mercy House, the care providers for the residents. This state-of-the art homeless shelter is located in the Historic French Park District of Santa Ana, California.



Photo: Eric Figge



Photo: Eric Figge

A quiet patio just outside the library on one side, and the kitchen on the other, provides residents with a garden retreat where they can enjoy a peaceful morning cup of coffee. In addition to the patio area, Emmanuel House also touts a deck on the second level of this two-story rustic home.



Elegant columns surround this large media room complete with over-sized television, VCR and stereo. Just outside the media room is the entrance to the chapel open to residents and their visiting families.



Photo: Eric Figge

Twenty-one comfortable bedroom and bath areas are complete with individual heating and air-conditioning units so that each guest can manage the environment making it suitable for their respective needs.





# Congratulations to all who brought the dream to life!



(From left) Emmanuel House superintendent, Dennis Reedy of John Laing Homes turns the keys over to Larry Haynes, Mercy House executive director. Looking on are Father Jerome Karcher, Mercy House founder, Lisa Mastropietro, Mercy House administrative director and Scott Larson, executive director of HomeAid Orange County.



Margaret and Carl Karcher of Carl Karcher Enterprises are joined by Brother Raymond at the Emmanuel House grand opening on April 29, 2001.



Dan Hanson senior vice president/director of affordable housing for Wells Fargo Bank is joined by the Building Industry Association of Orange County's acting chief executive officer, Lynne Fishel at the recent Emmanuel House celebration.



(from left) L.J. Edgcomb president of John Laing Homes and HomeAid Orange County board member Lee Rogaliner, of Bassenian/Lagoni Architects were on hand to celebrate with 400 guests who attended the recent Emmanuel House grand opening.



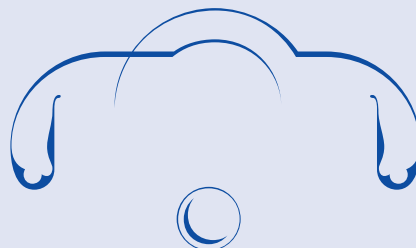
Greg Currens, HomeAid Orange County board member and Jon Robertson of California Pacific Homes take part in the Emmanuel House grand opening celebration.



Larry Webb, president of John Laing Homes, the Builder Captain for Emmanuel House is joined by Phil Hove one of the project's architects.



HomeAid Orange County board member, Nick Slevin, publisher of *Builder & Developer Magazine* and *Options Magazine* explores the 2nd floor of the 16,000 square-foot Emmanuel House.



Supporters from the BIA, Mercy House, HomeAid Orange County, the City of Santa Ana, the French Park Neighborhood Association and others gather to tour Emmanuel House.

**HOMEAID DONORS**

**CORPORATE CONTRIBUTORS**

*President's Circle*  
Burrow Escrow

*Founder*

*Builder & Developer Magazine*  
City National Bank  
The Irvine Company  
Los Angeles Times, Orange County

*Benefactor*

First American Title Company, Inc.

*Patron*

California Federal Bank  
Downey Savings  
Ernst & Young, LLP  
Western Digital Corp.  
William Lyon Homes

*Foundation Supporters*

Disneyland Community Service Award  
The Fieldstone Foundation  
Irvine Health Foundation  
Ludwick Family Foundation  
Pacific Life Foundation  
Staples Center Foundation  
Wells Fargo Foundation  
William Gillespie Foundation

A heartfelt thank you to all of HomeAid Orange County's in-kind sponsors, without your generosity HomeAid would not be able to continue its outreach to homeless men, women and children; you are to be congratulated!

**SAVE THE DATE**

Orange County Association of Realtors Bowling Tournament is coming in October...Mark your calendars for October 26th...Join in the fun...Let's have a Ball!

A special thank you to OCAR for its continued support of HomeAid Orange County. A portion of the proceeds from their annual events will be gifted to HomeAid at the end of the year.



**EMMANUEL HOUSE SHINES BRIGHTLY AT GOLD NUGGET AWARDS**

For 38 years, the Gold Nugget Awards have honored an exceptional roster of winners. This year's honorees emerged from 655 entries submitted from the Western United States and Countries from the Pacific Rim. The awards were presented at the Pacific Coast Builders Conference held in San Francisco on July 26th.

Sponsored by Wells Fargo, the Community Spirit Awards demonstrate the continued caring and concern from within the building community.

HomeAid garnered 2 out of the 7 Gold Nugget Building Industry Community Spirit Awards.

Emmanuel House, built by John Laing Homes with RNM Architects was the winning project from HomeAid Orange County. L.J. Edgcomb, Dan Nahabedian, Bob Tyler and Walt Richardson accepted the award on behalf of 200 plus Emmanuel House team. Congratulations!



**VALLEY BUILDING MATERIALS PRESENT... 6TH ANNUAL CHARITY GOLF TOURNAMENT**

**September 10, 2001**  
**9 a.m. - 6 p.m.**  
**Aliso Viejo Golf Club**

*A Great Time for a Great Cause*

Contact Chris/Pixie (949) 598-0256

**Proceeds will benefit HomeAid Orange County.**

**HOMEAID ORANGE COUNTY'S WEBSITE GETS A FACELIFT**

Our appreciation to Building Online for their continued contribution as HomeAid's website host and designer. Thanks to Building Online's efforts, the HomeAid website will have a new look and will provide more opportunities for interaction and information.



*HomeAid board member Michael Schlesinger director of community development for Taylor Woodrow Homes and Precious Life executive director Theresa Murphy recently attended the California Building Industry Association's Homebuilding Day On May 9th in Sacramento where the focus of the conference was to discuss California's housing needs.*

Each year the California Building Industry Association hosts a "Homebuilding Day" where hundreds of housing advocates come and discuss the issues facing the homebuilding industry and the need for housing. Following are excerpts from the "Smart Solutions to California's Housing Crisis" report.

**Where Will They Live?**

Statistics show that California's homeownership rate of 56% lags behind the national rate of 67%. The department of finance estimates that California's population will reach 58 million by 2040, which means 24 million more Californians will need a place to call home. Nearly 80% of that upsurge will be due to natural increase, which means it will be our children who are affected by the housing decisions that are made today.

According to the report, a healthy jobs/housing balance ratio is one home built for every one and one-half new jobs created. Last year in California, 531,000 jobs were created, with only 148,000 new homes. On average housing production in California's job centers, including Orange County is one-third of what it should be to support the jobs created.

On the positive side, the state's homebuilders are prepared to help lawmakers solve the challenge of how to grow smart in California while meeting the state's housing needs in the process. It has been suggested that shared industry and state goals should include the following:

1. Rebuilding local fiscal foundations to support housing close to jobs
2. Bringing affordable townhomes and condos back into production by curbing unnecessary lawsuits
3. Eliminating regulatory excess that significantly stall or shutdown needed infill housing projects
4. Opening up development opportunities in previously abandoned areas of our urban centers
5. Continuing a state commitment of funding for affordable housing
6. Setting a goal and establishing a plan for meeting California's long-term housing needs
7. Developing and capitalizing a viable infrastructure investment strategy and increasing home ownership

# RAINBOW OF HOPE HONORS



Bart Hansen of Nieupointe Enterprises, VOLUNTEER

Larry Buster of First American Title Company, Inc., CORPORATE PARTNER

Chris and Jeff Loftus of Aliso Air, Inc., SUB-CONTRACTOR

Gary Silverman of Royal Cabinets, SUB-CONTRACTOR



Dana Eggerts and Brooke Schneider of Creative Design Consultants, CONSULTANT

Dick Hunsaker & Associates, CONSULTANT

Michael Vairin, director of operations for Fieldstone Communities, BUILDER

Larry Leaman, Orange County Social Services (left) and Gene Howard, Orangewood Children's Foundation, CARE PROVIDER

HomeAid Orange County hosted over 420 distinguished guests at the third annual Rainbow of Hope Ball held at the Four Seasons Hotel. The \$133,000 generated from the black-tie gala, attended primarily by the building industry and its associates, benefited HomeAid Orange County's shelter development program, now in its 13th year.

Rainbow of Hope Ball 2001 was chaired by Michelle Pate, vice president of sales and marketing for Keystone Pacific Property Management, and Tim Paone, vice president entitlement department of The Irvine Company. Bill Mitchell, chief marketing officer/group senior vice president for The Irvine Company served as master of ceremonies.

A significant portion of the generated revenues were the direct result of corporate sponsor donations. Participating corporate sponsors contributing \$5,000 or more to the Rainbow of Hope Ball were: *Builder & Developer Magazine*, Burrow Escrow, Ernst & Young, First American Title Company, HomeAid America, Institutional Housing Partners, Oltmans Construction Company, Orangewood Children's Foundation, The Irvine Company, and William Lyon Homes.

Without the countless hours, cash, and in-kind contributions donated by the corporate partners, building industry, and their associates, many of the 19,000 plus homeless Orange County men, women and children would not have hope for temporary shelter. BRAVO to all who made this event such a resounding success!



The Keystone Pacific coalition made up the lion's share of the Rainbow of Hope Ball 2001 committee. (From left bottom row) Felesia Dailey, PennySaver; Sue Rudolph, Lennar Homes; Jamie Rose, Keystone; Joanie Smith, HomeAid Orange County; Carrie Powell, Keystone; and Jennifer Henderson, HomeAid Orange County (Back row from left) Julia Ung, HomeAid Orange County; Toni Blackman, Interior Specialists, Inc.; Michelle Pate of Keystone, event Co-Chair; Melissa Clegg, Keystone; Delene Garbo and Gina Economakos; both from HomeAid Orange County.



Event emcee, Bill Mitchell, The Irvine Company looks on as Bart Hansen exchanges a warm hug with El Modena Shelter graduate, Kathy McClintock.

## HOMEAID ORANGE COUNTY BOARD OF DIRECTORS

- Les Thomas, President  
Shea Homes
- Jay Blakslee, Treasurer  
J. Danner Corporation
- Val Celestin, Secretary  
Interiors by Valerie
- Brenda Silvey  
V.P. Fundraising
- Larry Buster  
First American Title Company, Inc.
- Greg Currens  
Consultant
- Steve Esser
- The Master's Program
- Mike Grubbs
- William Lyon Homes
- Donna Hahn  
Hahn Communications
- Bart Hansen  
Nieupointe Enterprises
- Stephen E. Hester  
Trimark Pacific Homes
- Sonia Lister  
Morrison & Foerster, LLP
- Carl Neuss  
Institutional Housing Partners
- Tim Paone  
The Irvine Company
- Lee Rogaliner  
Bassenian/Lagoni Architects
- Ron Saienni  
Biltmore Communities, Inc.
- Michael Schlesinger  
Taylor Woodrow Homes
- Nick Slevin  
*Builder and Developer Magazine*
- Chuck Trevisan  
Architect & Planning Consultant
- Cheryl Wyland  
Burrow Escrow

### THE HOMEAID MISSION

HomeAid Orange County, the founding chapter of HomeAid America, was established in 1989 by the Building Industry Association of Orange County (an affiliate of the National Association of Home Builders) as a 501 (c)3 charitable organization with the mission of building or renovating shelters for the temporarily homeless.

HomeAid serves individuals and families who find themselves without shelter due to factors such as domestic violence, job loss, catastrophic illness and crisis pregnancy. To date, HomeAid has raised over \$18 million in in-kind contributions resulting in the addition of over 550 shelter beds benefiting thousands of men, women and children in Southern California.



FOR MORE INFORMATION PLEASE CALL (949) 553-9510

# HOMEAID'S 10TH ANNUAL PROJECT PLAYHOUSE

September 15 ~ October 13, 2001



## 2001 BUILDERS & ARCHITECTS

### HomeAid Orange County Playhouses

Glass Construction Corp. with Hablinski Architecture

KB Home with KB Home Architecture

Mulvaney & Company with Richard Krantz Architecture

\*The Olson Company with William Hezmalhalch Architects

Pacific Design Estates with Sinclair Associates Architects

Rancho Mission Viejo/Western National Properties with William Hezmalhalch Architects

Shea Homes with William Hezmalhalch Architects

Tony Valentine Construction/KWC Construction

William Lyon Homes with Dennis Flynn Architects, Inc.

### HomeAid Greater Los Angeles - Ventura Playhouses

Pardee Homes - with Bassenian/Lagoni Architects

\*NEW URBAN WEST

ON DISPLAY AT THE OAKS MALL IN THOUSAND OAKS 9/4/01 - 10/12/01

(818) 725-7434

\*Opportunity Drawing Playhouse

### PREMIERE PARTY

September 15  
2:00 to 6:00 p.m.  
\$15 Donation

Exclusive Tours of Playhouse Interiors

### AUCTION PARTY & OPPORTUNITY DRAWING

October 13 ~ 5:30 to 9:30 p.m.  
Tickets include Auction Party, Dinner & Entertainment  
\$30 Prepaid ~ \$40 At the Door  
\$75 Family 4-Pack  
\$15 Children Under 12

Children Under 3 are FREE!

### VILLAGE TOURS

September 16 ~ October 13  
11:00 a.m. to 5:00 p.m.  
\$5 Donation

Weekends Only!

Tour tickets, Auction Party tickets and opportunity raffle tickets available at the HomeAid cart and the Fashion Island Concierge. For more information, please call HomeAid (949) 553-9510.

All proceeds benefit HomeAid, a non-profit organization that builds shelters for temporarily homeless men, women and children throughout Southern California.



**VOLVO**



**FASHION ISLAND™**

NEWPORT CENTER ~ NEWPORT BEACH

BLOOMINGDALE'S • BLOOMINGDALE'S HOME STORE • NEIMAN MARCUS • MACY'S • ROBINSON'S-MAY

For more information contact our Concierge at 949-721-2000.

shopfashionisland.com

**HOMEAID**  
**ORANGE COUNTY**

9 Executive Circle, Suite 100  
Irvine, California 92614

Address Service Requested

Non-Profit  
Bulk Rate  
U.S. Postage  
**PAID**  
Irvine, CA  
Permit No. 339